

WHICH AUTOMATION SOLUTION IS RIGHT FOR YOU?



UiPath and RPA Platforms are Better Suited for Large-Scale Enterprise Automation Projects Requiring Flexibility and Advanced AI Integrations, While Power Automate Excels in Automating Workflows within the Microsoft Ecosystem.



Complex Automation Capabilities

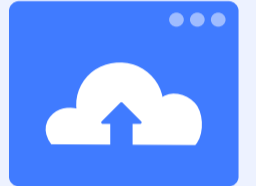
RPA (UIPATH)

Excels In Complex, Rule-Based Tasks And Interactions With Legacy Systems.

VS

POWER AUTOMATE

Focuses On Cloud-Based Workflows, Primarily Within The Microsoft Ecosystem.



Desktop Automation and Legacy Support

RPA (UIPATH)

Strong Support For Desktop Applications And Virtualized Environments.

VS

POWER AUTOMATE

Limited Desktop Automation Capabilities; Better Suited For Microsoft Apps.



Scalability and Governance

RPA (UIPATH)

Designed For Enterprise-Level Deployments With Robust Management Tools.

VS

POWER AUTOMATE

More Suited For Small To Mid-Sized Businesses; Scaling Can Be Complex.



AI and Machine Learning Integration

RPA (UIPATH)

Deep AI/ML Integrations For Advanced Document Processing.

VS

POWER AUTOMATE

Offers AI Builder, But Less Robust Than UiPath's Capabilities.



Bot Management and Orchestration

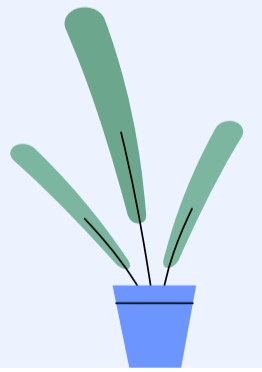
RPA (UIPATH)

Provides Enterprise-Grade Bot Management Through UiPath Orchestrator.

VS

POWER AUTOMATE

Lacks Centralized Orchestration, Complicating Large Deployments.



Customization and Integration

RPA (UIPATH)

Extensive Support For Third-Party Applications Beyond Microsoft.

VS

POWER AUTOMATE

Optimized For Microsoft Products; Limited Customization With Non-Microsoft Systems.



Unattended Automation

RPA (UIPATH)

Excels In Unattended Automation, Operating 24/7 Without Human Intervention.

VS

POWER AUTOMATE

More Focused On Attended Automation With Some Unattended Capabilities

Looking To Learn More?

[Talk to our experts today!](#)

